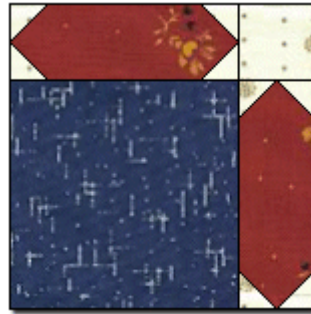
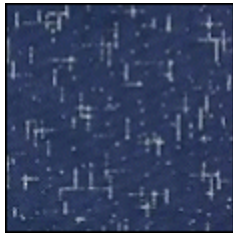


A 1914 block-that-isn't-a-block!...so this is another of those "Method" instructionals, as opposed to a real "Block pattern" This design is named for it's SASHING, which forms the stars!

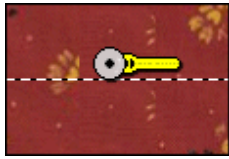


**\*\* Preparing the Pieces and Sewing the Units \*\***

The instructions below will give a quilt block that is a finished 12-1/2"



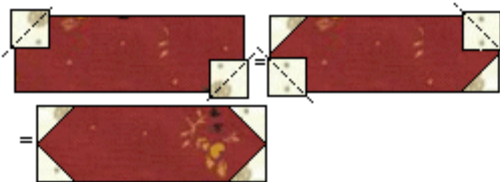
Start by cutting blue fabric into a 9-1/2" square.



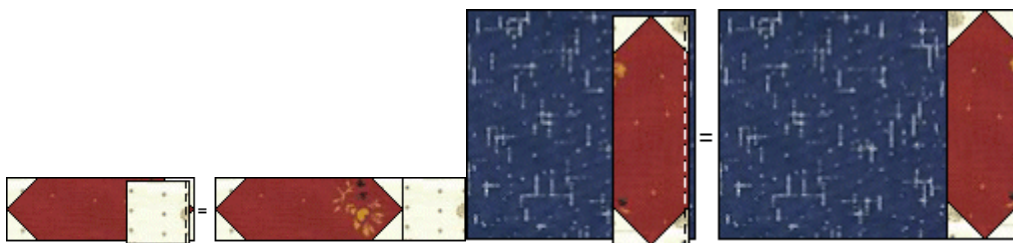
Then cut 2 red sashing 3-1/2" x 9-1/2".



For the sashings cut eight 2" white squares, and one 3-1/2 " square.



Draw a light diagonal line on the back of the white 2" square, and sew ON this drawn line. Cut off the excess seam allowance, leaving 1/4", pressing that seam allowances towards the red rectangle. Repeat on all four corners. Next add the 3 1/2" square to the right side as shown to only one of your shshings.



Sew the sashing without the 3 1/2 square to the 9 1/2 in blue square, then add the sashing unit with the 3 1/2 " square to the top. You're done and the block should look like the top picture. Thank you.